



ASSOCIATED & CATHOLIC COLLEGES
of WESTERN AUSTRALIA

**Associated & Catholic Colleges
Of
Western Australia (Inc)**

Charter of Operations

for

No Limits Cricket Carnival

2021

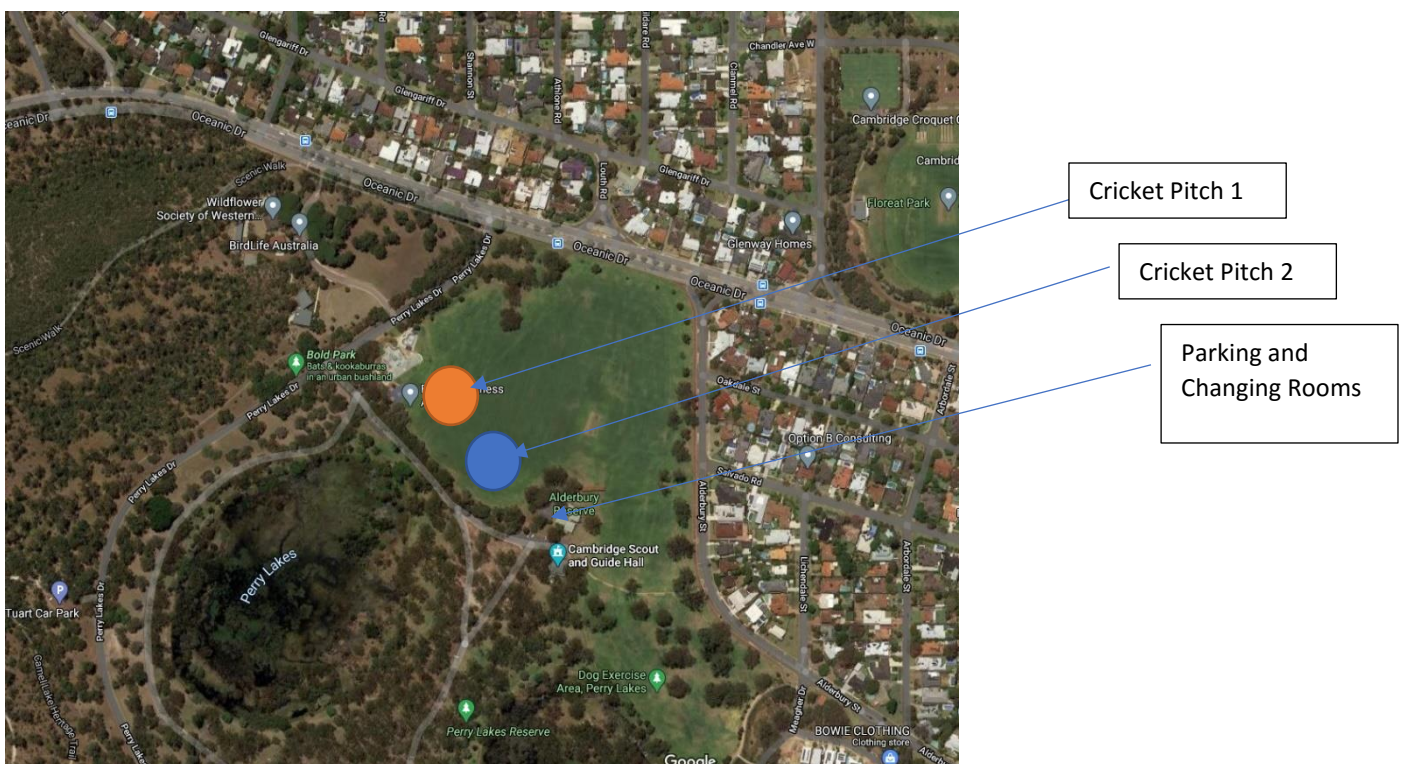
Contents

1.0	General Information	3
2.0	Nominations of Students	3
3.0	Supervision.....	4
4.0	First Aid	4
5.0	Spectators	4
6.0	Marquees and Weather	4
7.0	Format of the Day	4
8.0	ACC No Limits / Rapid Fire Cricket Rules.....	5
9.0	Match Scorecards.....	6

1.0 General Information

The No Limits Cricket Carnival is run in partnership with the WACA and SEDA cricket program and is a modified all abilities version of the game of cricket. Any student with a disability (Years 7 to 12), whether enrolled in an Education Support unit or not, is eligible to attend. ACC No Limits sport carnivals also serve as an integrated event and schools are required to also nominate a minimum of three mainstream students to also participate in the event.

- **Date:** Friday the 26th of March, 2021 (Term 1)
- **Venue:** Alderbury Reserve, Oceanic Dr, Floreat, WA, 6014



- **Time:** 10:00am – 1:30pm
 - Schools are asked to arrive at 9:30am for marquee setup and marshalling.

2.0 Nominations of Students

Any student with a disability (years 7 to 12), whether enrolled in an Education Support unit or not, is eligible to attend. **Schools are required to bring a minimum of three mainstream students to participate in the integrated format.**

Nominations Due: Thursday the 11th of March

Nominations can be submitted via: <https://www.accsport.asn.au/carnivals/inclusive-sports-program/no-limits-cricket/nominations>

3.0 Supervision

Schools nominating students must make arrangements for adequate supervision and Ensure adequate number of staff are available to supervise all of your students in their school cricket team

School supervising staff are required to assist with students needs throughout the day.

4.0 First Aid

Injuries are to be attended by the individual school staff.

The ACC will provide St John Ambulance First Aid team at the event which will be an oncost for all participating schools.

Students receiving First Aid care **must** be under the supervision of a staff member that their relevant case history and specific needs are communicated.

Schools and students are to wear sun protection at all times.

5.0 Spectators

Spectators are permitted but to be supervised by school staff at all times.

6.0 Marquees and Weather

All schools are encouraged to source their own provisions for shade/shelter/protection. In the event that the forecast for the day is inclement weather, the ACC will SMS all school Inclusive Coordinators representatives and advise accordingly by 8.30am on the morning of the carnival.

Marquees are to be set-up by schools to use on day. Please bring your school marquee and tarpaulin for seating if required.

NOTE: There is limited shelter at the venue and weather is expected to be hot this time of year.

7.0 Format of the Day

Schools are to arrive at the venue by 9.30am to set up their school base and erect any shade or shelter provisions.

At 9.35am the ACC Inclusion Officer and WACA representative will formally welcome and address all schools in attendance and usher the teams to their designated coaching area group.

All teams will attend a short 30-minute coaching clinic conducted by the SEDA Cricket students focused on the skills of the modified cricket game-Rapid Fire.

Round Robin games will commence via an air-horn until completed or after 25 minutes have been played.

All teams and carers will assemble back to their school position and break for morning tea and lunch according to the program of events.

This will be provided prior to the day to all attending schools.

Team will play in a Round Robin Format, with a Semi-Final and Final round.

All participants will receive an ACC / WACA participation certificate, and the winning school will receive a perpetual trophy.

NOTE: Assistance throughout the day will be from the WACA and SEDA Cricket Australia.

8.0 ACC No Limits / Rapid Fire Cricket Rules

- Team Rapid Fire is a game played in two teams, one batting and one fielding
- Teams have 8 players on field at one time. 3 mainstream and 5 Inclusive (NO LIMITS) students.
- 2 players from the batting team strike 3 balls each off the tee one after the other and then complete runs between two Stumps until the fielding team return the balls to their original position on the marker.
- Balls can be hit in any direction.
- One Run is awarded for every run the pair complete.
- Cones on the field represent the 'Safety Line' and suggested fielding positions.
- The fielding team cannot cross the designated safety line (marked by cones) until all balls have been hit.
- Fielding team may catch the ball if it is within reach. A successful catch will result in 5 runs been deducted from the oppositions score.
- Fielders may physically carry the balls back in or throw to teammates.
- Once all balls are returned and placed on tees, the batters turn is complete and runs scored recorded.
- The batting team then sends out the next pair. Once all batters have batted once, the two teams swap over.
- No pair may score less than zero.
- The team with most runs scored is declared the winner.
- Maximum time for game is 25 minutes.

9.0 Match Scorecards



NO LIMITS
ACC INCLUSION SPORT



WACA
WESTERN AUSTRALIAN
CRICKET ASSOCIATION

Rapid Fire - Game 1			
Team:			
	Runs	Catches	Total
Batter 1 & 2			
Batter 3 & 4			
Batter 5 & 6			
Batter 7 & 8			
Batter 9 & 10			
Team Score:			
Team:			
	Runs	Catches	Total
Batter 1 & 2			
Batter 3 & 4			
Batter 5 & 6			
Batter 7 & 8			
Batter 9 & 10			
Team Score:			