

Appendix 6s

To "Cross Country"

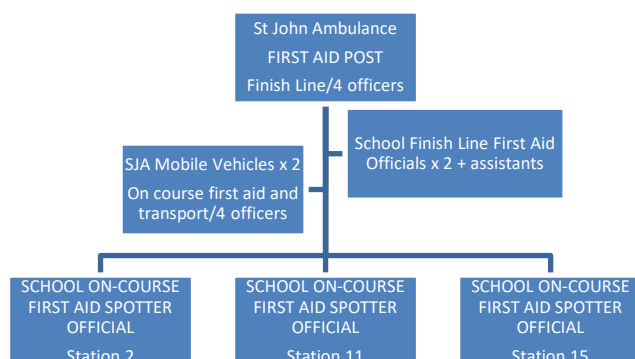
FIRST AID SPOTTER OFFICIALS

First Aid officials (St John Ambulance) will be in attendance and located in the first aid post next to the finish line on Alderbury Reserve. Four SJA first aid event officers will man the main post and they will also have two mobile patient retrieval vehicles out on the course (stations 6 & 15), both with two SJA officers per vehicle. The SJA event officers will have their own radio network separate to the ACC radio channels. The main first aid post will also have one ACC two-way radio for communication with ACC officials.

In addition to the official SJA first aid officers, **three** of the participating schools are allocated the task of providing on-course first aid "spotting" staff officials (located at stations 2/11/15). Two schools will also provide first aid spotter officials at the finish line. It is recommended that the school on-course first aid spotter officials have a minimum of a Senior First Aid or Sports First Aid qualification. The primary role of the school first aid spotter official is to look out for first aid incidents, assess the incident and radio the SJA first aid post to report on the incident. The spotter officials must administer immediate first aid in critical care/life threatening situations until the SJA officers arrive. Injury treatment of non-life-threatening incidents is not the role of the spotter.

The process for first aid treatment is as follows:

- Minor injuries/ailments should be treated by school staff and not the official SJA first aid officers. Individual schools must have their own first aid equipment and designated staff to cope with any minor injuries.
- Injured and distressed competitors at the finish line will be assessed by school finish line first aid officials at the finish line and then if required treated by SJA officers in the official first aid post adjacent to the finish. SJA officers will remain at the post unless called to the finish line in an emergency. The school finish first aid role involves spotting first aid incidents, providing initial assessment and immediate aid and then either seeking assistance from the main first aid post or assisting the patient to the first aid post.
- In the case of an injury to a competitor on the course the following procedure should be followed:
 - The closest station official should send their student assistant to the closest school first aid spotter official with a two-way radio (located at the finish area, stations 2/11/15 or the roaming SJA mobile vehicles based near station 15 (Meagher Drive road closure) and centrally near station 6 and ask them to attend to the injured athlete. Course scooter drivers also have two-way radios if necessary.
 - The school first aid spotter official needs to provide any immediate first aid that they can and assess the severity of the injury.
 - Severe: Any injury which is life threatening or any major injury such as a suspected fracture/dislocation, severe sprain/strain. School first aid spotter officials should radio the SJA first aid post and ask the mobile SJA officer to attend the injured athlete at the course location.
 - Less Severe: Any injury which is not life threatening (i.e. less severe sprains/strains) and the runner cannot walk back to their team area. The school first aid spotter official should radio the SJA first aid post and ask the mobile SJA officer to attend the injured athlete at the course location.
 - Minor: Minor sprains, strains etc... If the injury is very minor the student can either walk back to the school area or the first aid post. If the student is unable to walk, then the school first aid spotter official should radio the mobile SJA officer and ask them to report to the course location and transport the athlete to the main first aid post. If in doubt radio the SJA officers.
 - Students with severe injuries that are unable to be safely transported to the first aid post will remain on course and an ambulance called for professional transportation. SJA event officers will assess these situations and act as they deem appropriate.
 - School first aid spotter officials on course should always contact the SJA first aid post if they are unsure about the management of an injured athlete.



- If a student requires transportation to a hospital or medical centre, the school concerned must be equipped, both with sufficient staff and transportation, to meet the "need". Supervision of the bulk of competitors throughout the day, however, must be maintained.
- The decision to call for an ambulance will be made by the senior SJA first aid official. The SJA officer will inform the ACC carnival manager and relevant school staff.
- The two school first aid spotter officials, school finish first aid officials and the SJA lead officer must report to the officials briefing at **8.00am**.
- First aid officials should familiarize themselves with the Risk Management, Safety and Evacuation procedures in Appendix 22.